

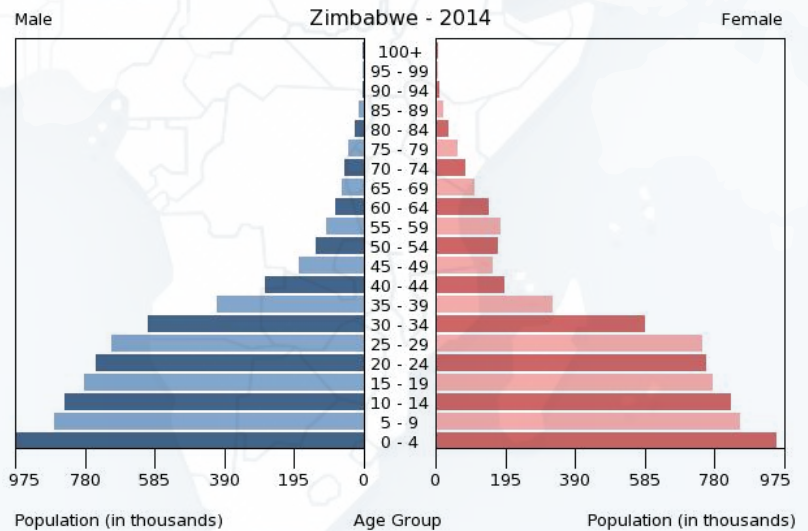
# ZIMBABWE: ECD PROFILE



## FAST FACTS

- Total population: 15,603,000.
- GDP growth rate: 1.40%.
- 64% of the population live under the poverty line (1.25 USD).
- Life Expectancy at birth: 59 Yrs. \*
- Female adult literacy rate: 91%.
- Capital city: Harare.

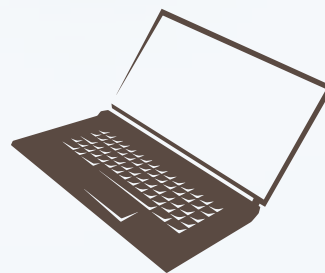
### Population Pyramid



Data source: CIA World Factbook 2016

### Media Usage (Per 100 Population)

Mobile Users	Internet Users
81	20



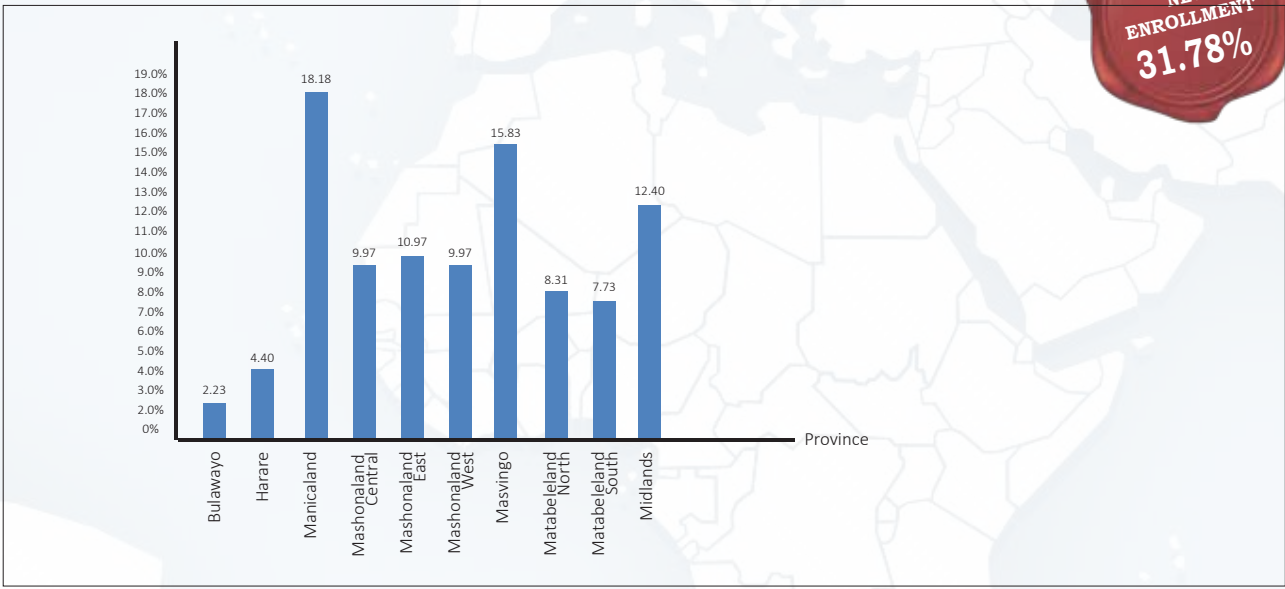
# EARLY LEARNING

# NATIONAL PARENTING PROGRAMME ? NO

## Net Enrollment Rate (per Province)

Data source: Dzvoza & Dyanda 2015

Data source: UNESCO 2012  
**PRE-PRIMARY NET ENROLLMENT**  
**31.78%**



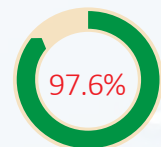
## PUPIL TEACHER RATIO



**37:1**

Data source: Education Management Information System

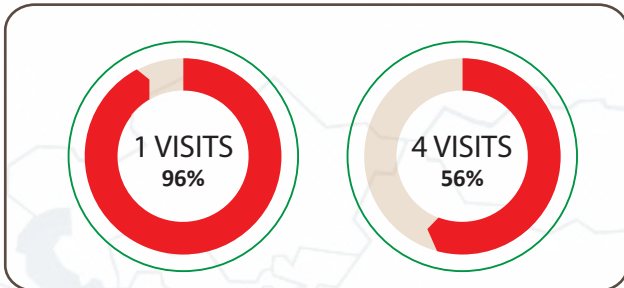
**Trained ECD Teachers**



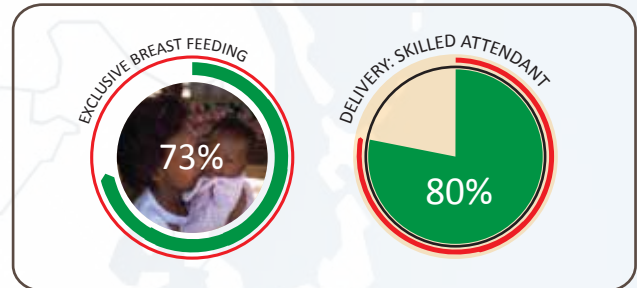
Data source: UNESCO 2012

# CHILD & MATERNAL HEALTH

## Antenatal Care Visits (2010 - 2015)

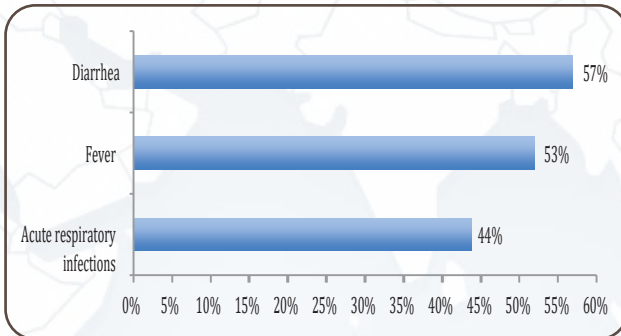


## Maternal Health Care



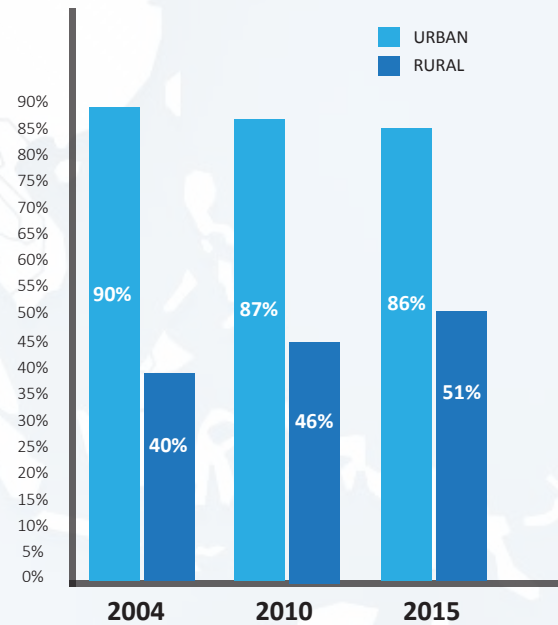
## Health Seeking Behaviour

Proportion of caregivers NOT seeking treatment from health facility for:

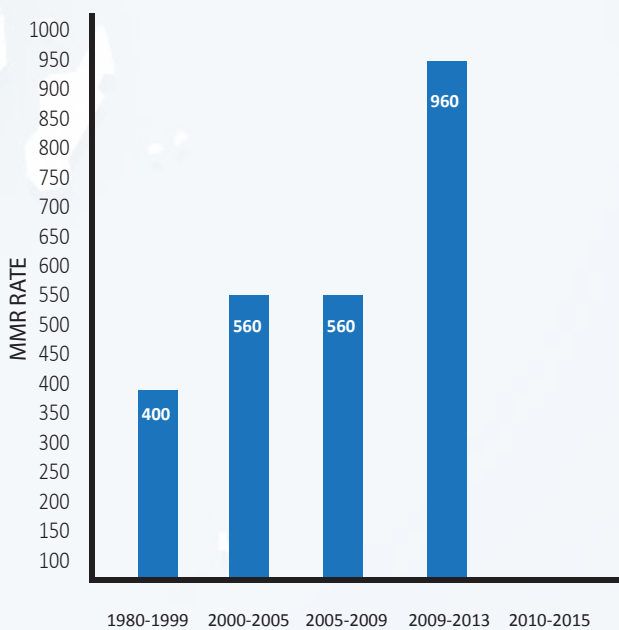


Data source: Kenya Demographic Health Survey, 2014.

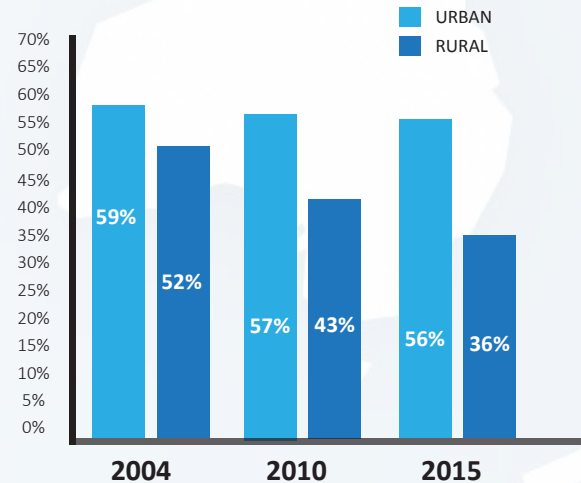
## Access to Improved Drinking Water Source



## Maternal Mortality Ratio (Reported 1980 - 2015)



## Access to Improved Sanitation

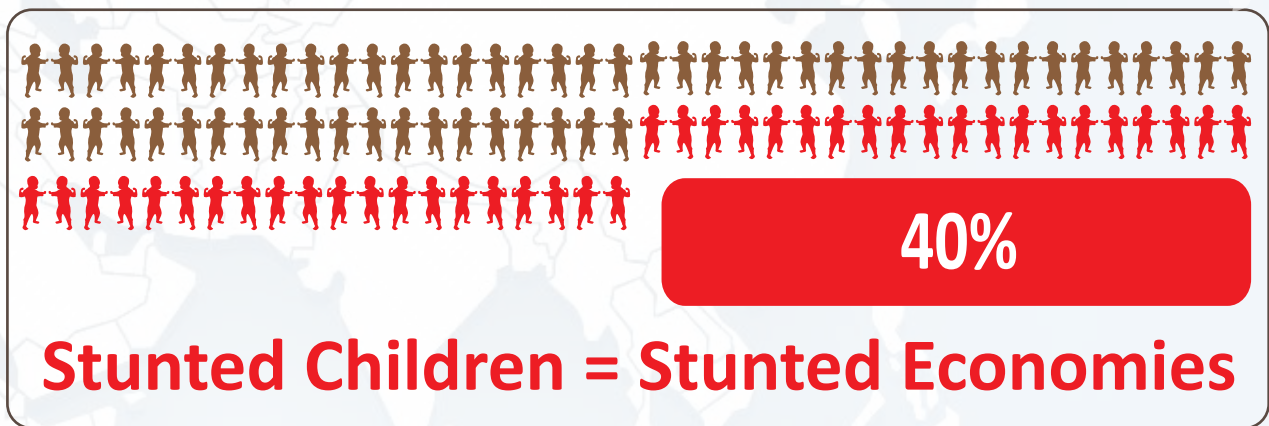




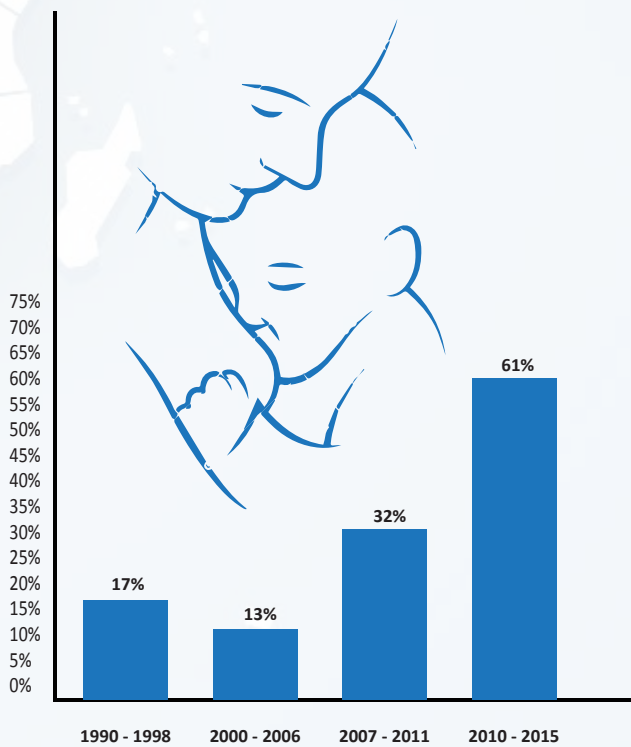


# CHILD & MATERNAL NUTRITION

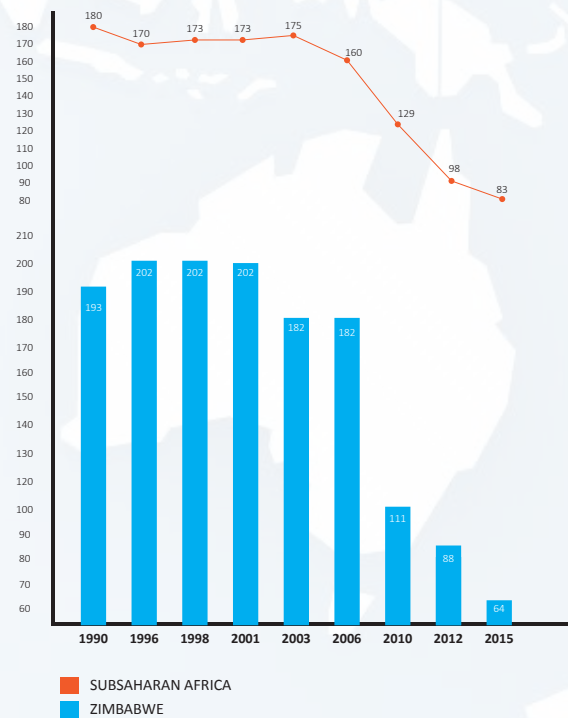
## Stunting Prevalence



**Maternal Nutrition: Exclusive Breast Feeding (1990 - 2015)**



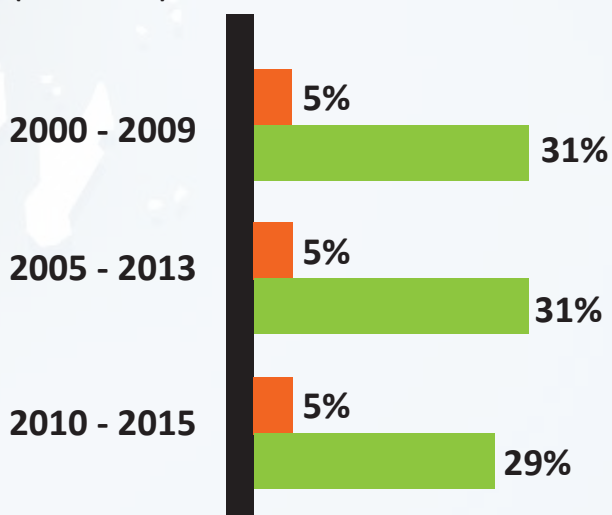
**Under Five Mortality Rate (1990-2015)**



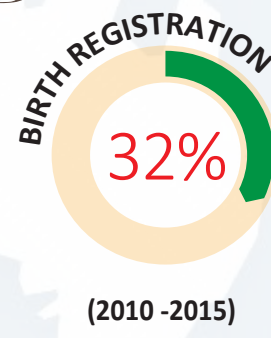
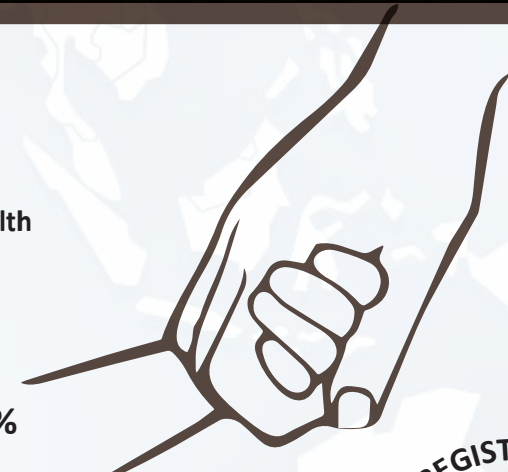


# CHILD PROTECTION

Birth Registration: Disparities by Household Wealth (2000 - 2015)



KEY



NUMBER OF ORPHANED AND VULNERABLE CHILDREN

810,000





## NATIONAL ECD PROGRAM

### POLICIES/GUIDELINES

POLICIES / GUIDELINES	YES/NO	DATE	REMARKS
Does a national multi-sectoral ECD policy exist?	NO		There are sectoral policy such as HIV, Education and Child Protection but these are not harmonised for ECD.
Does a national ECD curriculum for children 0-3 years exist?	YES		Different organisation have developed own parental manuals but these have no national mandate.
Does a national ECD curriculum for children 4- 6 years exist?	YES	2014	Yes it does although it does not indicate what needs to be done in ECD A or B.
Are there minimum standards and guidelines?	YES		They exist but not nationally adopted
Does a national teacher training programme	YES	2014	All the teachers' colleges now offer ECD and there are several universities which offer degrees in the area.
Does the country have an approved GPE plan?	YES	2013	It is funded through UNICEF but implemented through the Ministry of Primary and Secondary Education.
Does the country have a pre-primary policy?	YES	2004	However this fragmented in Ministerial Directives and Circulars
Does the education system include pre-primary/reception class/pre-unit?	YES	2004	The Education System now additionally includes two years of pre-primary school.
Does the government provide early learning services e.g kindergarten, pre-primary etc?	YES	2011	All primary schools must have ECD A and B and no child to be enrolled in primary school without ECDE.
Are the early learning services free?	NO		A lot of ECD centres are private and business oriented and to some extent exclusive in their fee structure. School based ECDs are cheaper and affordable but are plagued with under-funding. The cheapest and unregistered ECD centres tend to be poorly teacher quality resourced.

### FINANCE/BUDGET

	YES/NO	% OF TOTAL AMOUNT (\$)
Does the GPE plan include ECD?	NO	The early reading initiative (ERI) is meant for primary school learners and not pre-schools.
Does Education budget include ECD?	NO	Only in terms of teacher salaries support and very limited infrastructure development (classroom provision)

### GOVERNANCE AND COORDINATION

	MINISTRY	ROLE
Which other ministries are involved in implementation of ECD?	Ministry of Primary and Secondary Education	Education Policy coordination Early learning
	Ministry of Health and Child Welfare	Health and welfare of children (nutrition, immunisation, etc)
	Ministry of Labour, Public Service and Social Welfare	Child protection issues Social service Welfare Safety nets
	Ministry of Community Development, Gender and Women's Affairs	Parenting programs



## Challenges

- \* Despite ongoing training of teachers and specialists in ECD, there is an overall shortage of trained ECD teachers.
- \* Private ECD centres find it very difficult to register their centres making reporting incomplete and quality control problematic.
- \* Zimbabwean children are still facing issues of accessing ART as it is still difficult to reach the target 95% of HIV+ pregnant women with drugs and medication adherence to reduce the levels of mother to child transmission.

\* Adult literacy rate: Females as a percentage of Males (2006 - 2014)